

Epic WiFi Extenders Guide



Selecting the best location

Do's

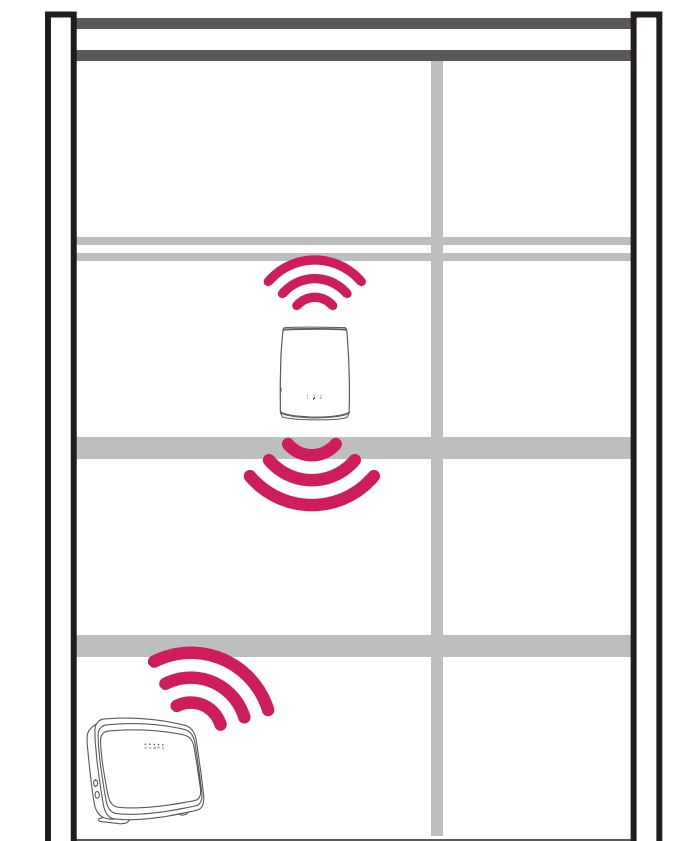
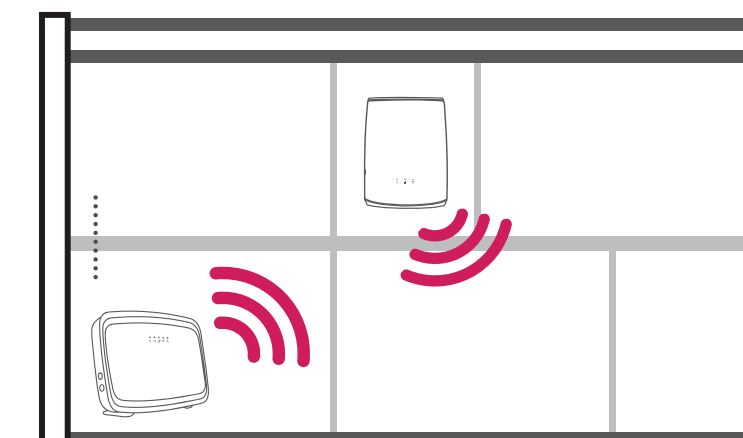
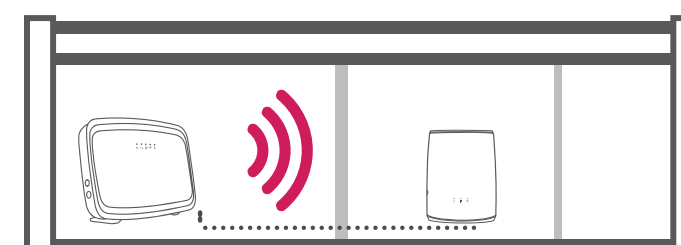
Position halfway between a trouble WiFi area and modem.
Place in an area that results in the below Link LED.

Green = good

Don'ts

Place in confined/covered location
Place on soft (couch or carpet) or delicate surface
Place outside
Place in an area that results in the below Link LED's.

Green = Excellent
Yellow = Average / Ok
Red = Poor



Companion Mode
Compatible Devices



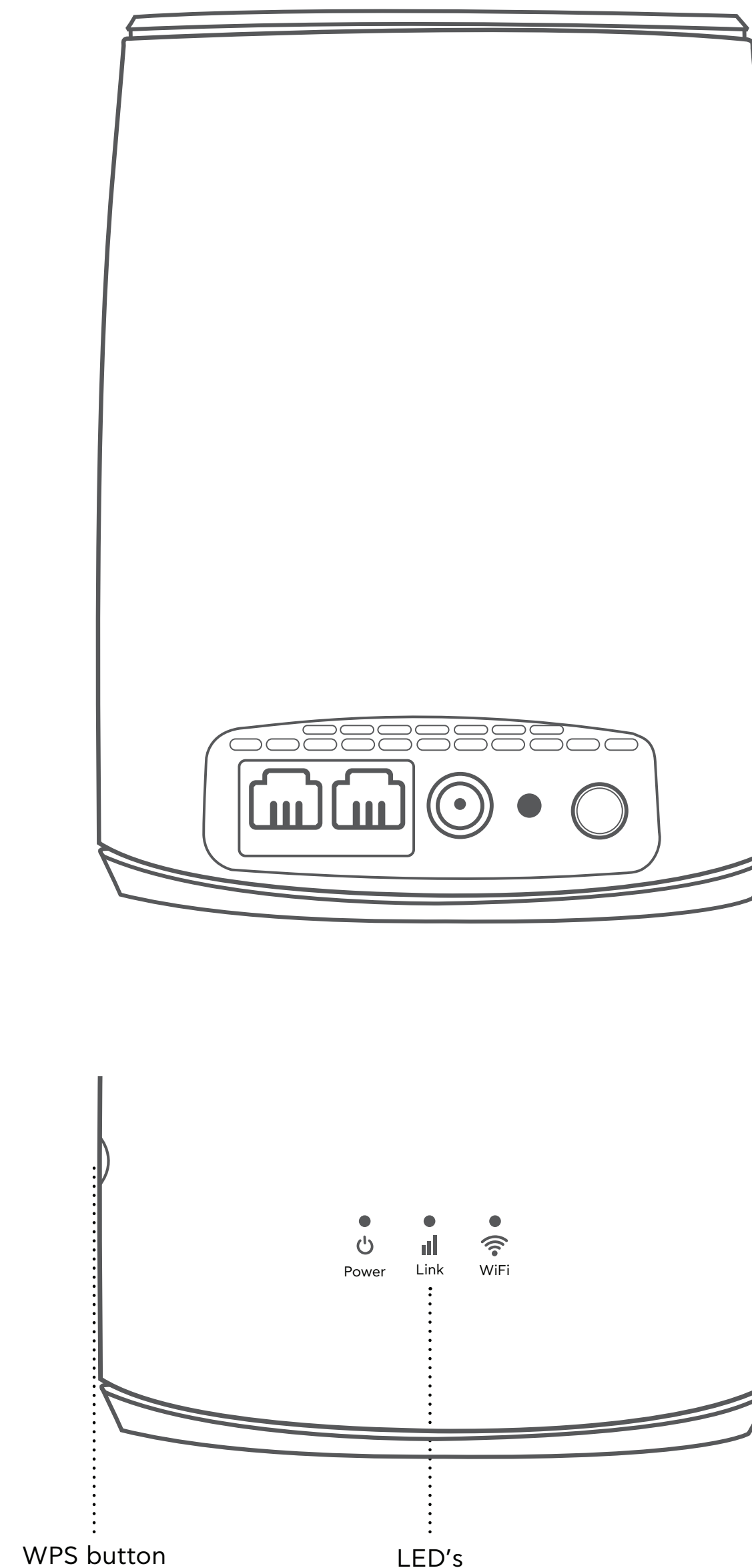
—

Standalone Mode
Compatible Devices



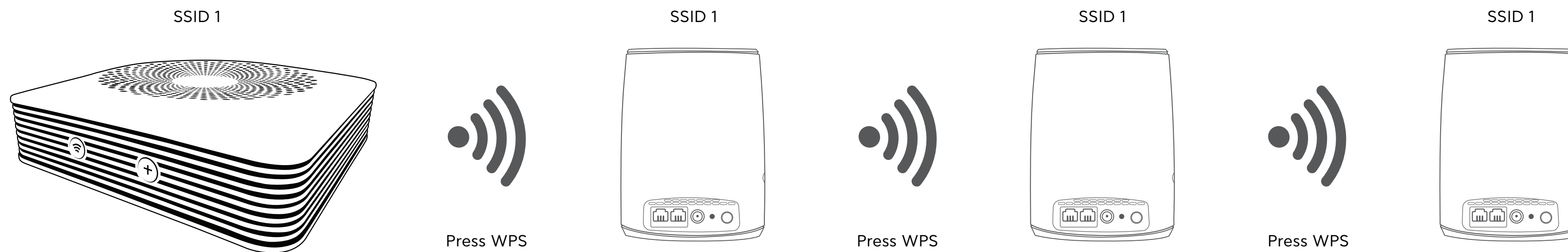
Companion Mode

1. Connect the power adaptor to the WiFi Extender power port, plug into the closest power outlet to your modem and switch the WiFi Extender on. If you are setting up more than one WiFi Extender unit, simply repeat these steps for each unit.
2. Wait until the Link LED turns flashing red. Next, press the WPS buttons on your modem and on your WiFi Extender, the Wi-Fi LED should start to blink. The WiFi Extender will adopt the Wireless Network (SSID) of your modem and the Link LED will turn either red, orange or green depending on the signal strength. The Wi-Fi LED will move from a blinking to solid.



Companion Mode (cont.)

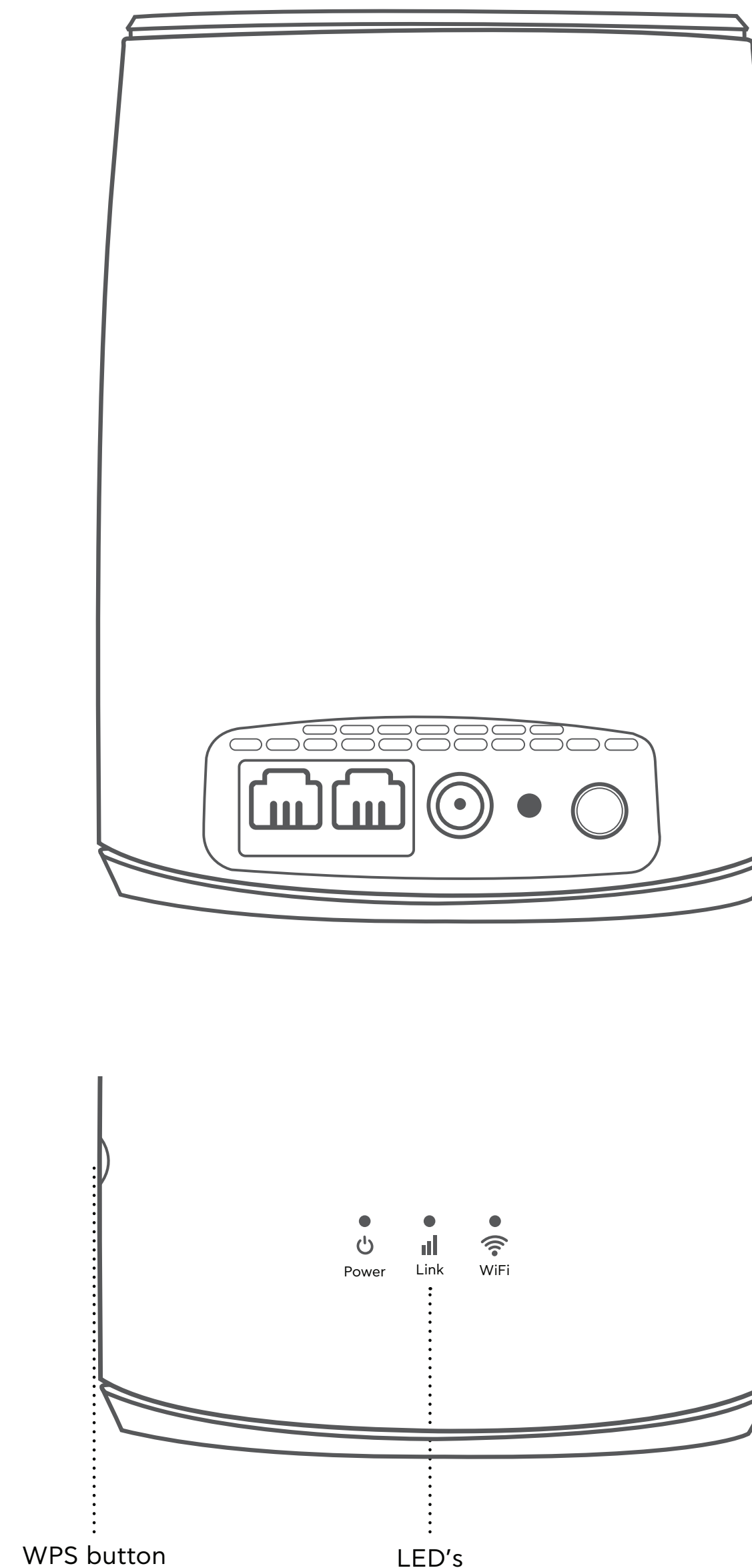
3. Finally move your WiFi Extender to the required location, if the Link LED changes to red or flashing red, the WiFi Extender is too far from the modem. Move closer to the modem until the Link LED is green or orange. The Link LED should be green for optimal performance.



Note: The Wi-Fi Name / SSID and Wi-Fi Password of the Wi-Fi Pod will be cloned from the modem.

Standalone Mode

1. Connect the power adaptor to the WiFi Extender power port, plug into the closest power outlet to your modem and switch the WiFi Extender on. Connect the first WiFi Extender via a network cable to the modem. Wait until the Link LED turns green.
2. Next, press the WPS buttons on the first WiFi Extender and the next WiFi Extender, the Wi-Fi LED should start to blink green. The WiFi Extender will adopt the Wireless Network (SSID) of your first WiFi Extender and the Link LED will turn either red, orange or green depending on the signal strength. The Link LED will move from a blinking green to a constant green.



Standalone Mode (cont.)

3. Move the next WiFi Extender to the required location, if the Link LED changes to red or flashing red the WiFi Extender is too far from the other WiFi Extender. Move closer to the WiFi Extender until the Link LED is green or orange. The Link LED should be green for optimal performance.

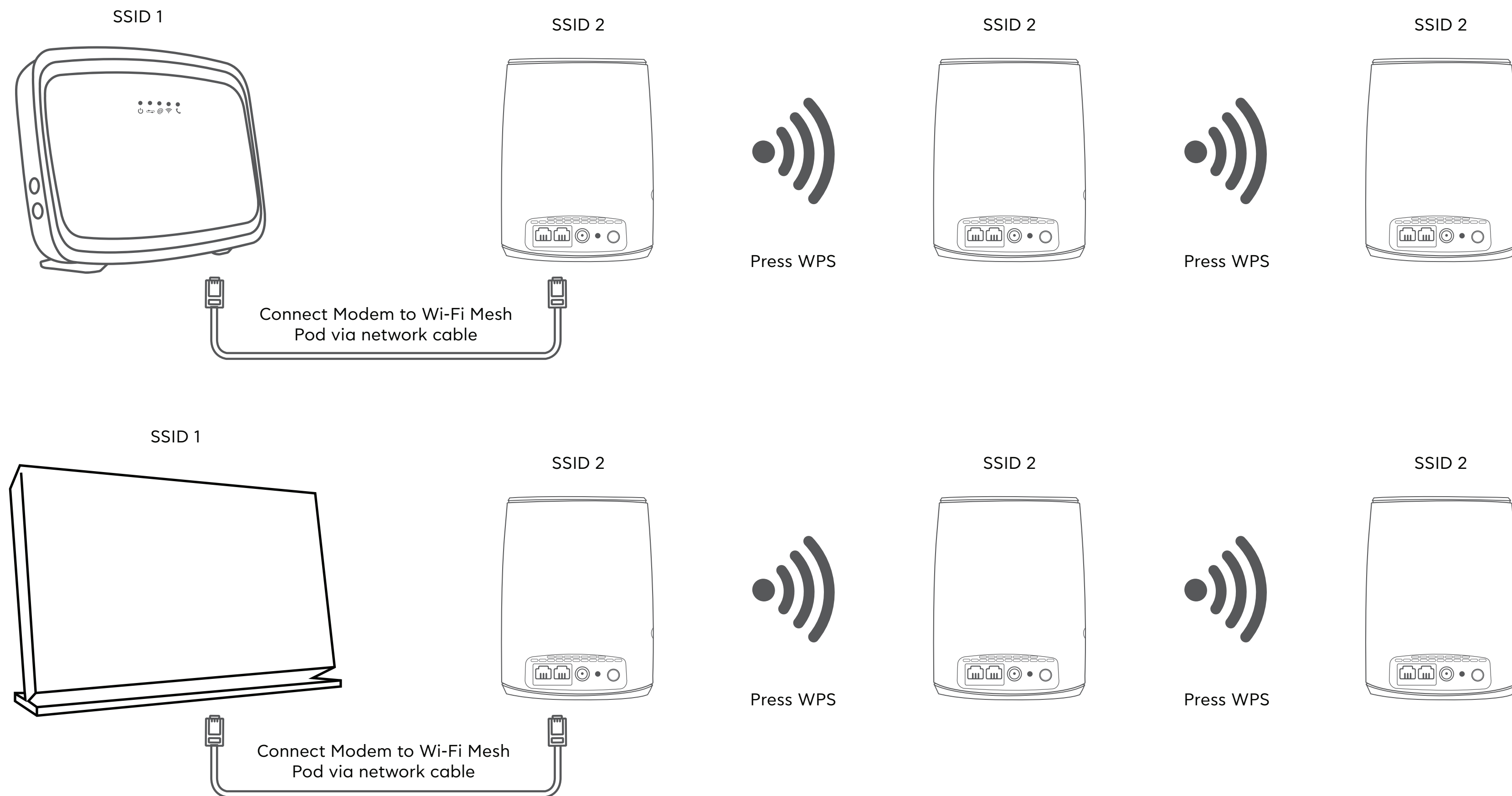
Note: If you have more than two Extenders kindly repeat Steps 2 and 3.

Note: The SSID and Password will be cloned from the first WiFi Extender. (The WiFi Extender connected to the modem via network cable) Check underneath the first WiFi Extender for the SSID and password.

Note: It is recommended that the Wi-Fi of the Modem is turned off so that only one Wi-Fi Name is broadcasted in the home.



Configuration with Standalone Mode



Note: The Wi-Fi Name / SSID and Wi-Fi Password will be cloned from the first Wi-Fi Extender.

Troubleshooting

Basics

The Link LED should be solid.

The backhaul link LED should be SOLID, either green, orange or red. It is best if this LED is solid green, however a solid orange or a solid red is acceptable.

The Wi-Fi Fronthaul LED should be solid.

The diagram at the side outlines what each led means.

Indicator	Status	Description
Power	On	The Epic Smart WiFi is powered on
	Flashing	Software upgrade in progress (Please do not switch off)
	Off	The Epic Smart WiFi is powered off
Link	Off	No link to the modem
	Green	Excellent link to the modem
	Orange	Good link to the modem
	Red	Poor link to the modem
	Blinking Red	Connection to the modem has been lost
WiFi	On	Wifi is enabled
	Flashing	WPS is triggered and WPS pairing slot is open
	Off	The Wifi is disabled

Troubleshooting (cont.)

Basic Troubleshooting

Power LED flashing all other LED's solid; Device update is in progress, please wait a few minutes.

Wi-Fi LED flashing all other LED's solid; the device is waiting to pair.

Power LED is solid. Link LED is flashing red. Wi-Fi LED is OFF; the device is trying to make a connection to the modem, please wait a few minutes

Power LED is solid. Link LED is flashing red. Wi-Fi LED is solid; the connection between the Smart Wi-Fi hub and your modem has been lost.

